

iMEDIAN HD & iMON User Guide



Revised on Jun 10, 2008
by Sound Graph, Inc.

Table of contents

iMEDIAN HD

| | | |
|-------|--|----|
| 1 | iMEDIAN HD | 4 |
| 1.1 | Overview | 4 |
| 1.2 | Navigating iMEDIAN HD | 4 |
| 2 | Initial Wizard Setup | 5 |
| 2.1 | User Interface | 5 |
| 2.2 | Media Library | 5 |
| 2.2.1 | Creating A Media Library | 5 |
| 2.2.2 | Library View | 6 |
| 2.3 | Display | 8 |
| 2.4 | Audio | 8 |
| 2.5 | TV | 8 |
| 2.6 | Video Performance | 9 |
| 3 | Listening To Music | 9 |
| 3.1 | Searching Music | 9 |
| 3.2 | Play / Pause | 10 |
| 3.3 | Next / Previous | 10 |
| 3.4 | FF / RW | 10 |
| 3.4 | Entering a menu while listening to music | 10 |
| 3.6 | Entering Music sub menu | 11 |
| 4 | Watching Videos | 13 |
| 4.1 | Searching Video files | 13 |
| 4.2 | Play / Pause | 13 |
| 4.3 | Next / Previous | 13 |
| 4.4 | FF / RW | 13 |
| 4.5 | Entering a menu during a video | 14 |
| 4.6 | Entering Video sub menu | 14 |
| 5 | Viewing Pictures | 14 |
| 5.1 | Searching Pictures | 14 |
| 5.2 | Play slideshow / Pause slideshow | 14 |
| 5.3 | Next / Previous | 15 |
| 5.4 | FF / RW | 15 |
| 5.5 | Entering a menu while slideshow is playing | 15 |
| 5.4 | Entering Pictures sub menu | 15 |
| 6 | Settings | 16 |

| | | |
|-----|---------------|----|
| 6.1 | General | 17 |
| 6.2 | Media Library | 19 |
| 6.3 | Media | 19 |
| 6.4 | DVD | 20 |
| 6.5 | TV | 20 |

iMON

| | | |
|-------|----------------------|----|
| 1 | Overview | 20 |
| 2 | iMON Manager | 21 |
| 2.1 | Window | 21 |
| 2.2 | Settings | 21 |
| 2.2.1 | Remote control | 21 |
| 2.2.2 | Program Command | 22 |
| 2.2.3 | Window Command | 23 |
| 2.2.4 | Custom Command | 24 |
| 2.2.5 | Macro Command | 25 |
| 2.2.6 | Speed | 25 |
| 2.3 | Option | 26 |
| 2.3.1 | System | 26 |
| 2.3.2 | News | 27 |
| 2.3.3 | Webcasting | 27 |
| 2.3.4 | Version / Update | 28 |
| 2.4 | iMON Utilities | 28 |
| 2.4.1 | Application | 28 |
| 2.4.2 | Front View | 29 |
| 2.4.3 | Virtual Keyboard | 32 |
| 2.4.4 | Timer | 33 |
| 2.4.5 | Resolution Changer | 33 |
| 3 | iMON Utilities | 34 |
| 3.1 | Application Launcher | 34 |
| 3.2 | Task Switcher | 35 |
| 3.3 | Front View | 36 |
| 3.4 | Timer | 36 |
| 3.5 | Resolution Changer | 37 |
| 3.6 | Virtual Keyboard | 37 |
| 4 | iTOOL | 38 |

iMEDIAN HD

1. iMEDIAN HD

1.1. Overview

iMEDIAN HD is a simple but powerful media player which can be controlled by only 4 directional buttons and supports a wide range of media formats and devices.

Supported Formats

Music :

.mp3/.ogg/.wma/.wav/.aac/.ac3/.ape/.flac/.m4a/.mid/.mka/.mp2/.mp/.mpc/.ape/.ofr/.wv/.tta/.ac3/.dts/.cda/.ra/.m3u/.pls

Videos :

.avi/.asf/.wmv/.mpeg/.mpg/.m1v/.mp2/.dat/.mp4/.ogm/.mov/.rm/.rmvb/..avs/.flv/.mkv/.3gp/.ogm/.ifo/.vob/.ts/.tp

Pictures :

.bmp/.gif/.jpg/.png

OS : Windows 98, ME, 2000, XP and VISTA

1.2. Navigating iMEDIAN HD



Short Previous Page
Click

Long Home
Click



Short Up
Click

Long RW while Media playing
Click



Short Next Page
Click Play/Pause while Media playing

Long Entering sub menu
Click



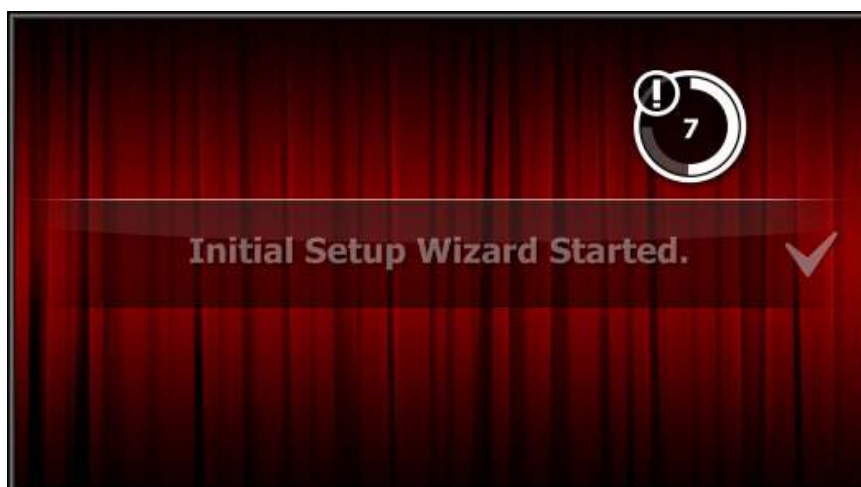
Short Down
Click

Long FF while Media Playing
Click

2. Initial Setup Wizard

The first time you run iMEDIAN HD, press the right button and the Initial Setup message will appear.

You can configure general settings like User Interface, Media Library, Display, Audio and TV through the Initial Setup Wizard.



2.1. User Interface

Color : Select color of iMEDIAN HD background.

Font : Select Font.



2.2. Media Library

The Media Library is a collection of your media files. The Media Library makes it easy to classify and search a huge media collection.



2.2.1 Creating A Media Library

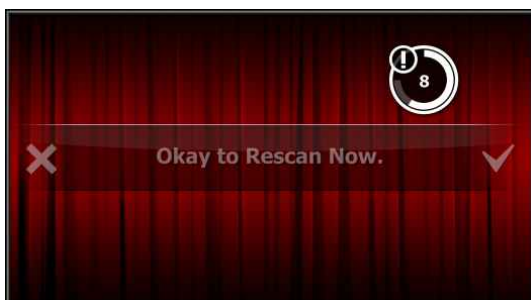
- Add Scan Folder

Add the folder (including sub folders) that you want to add into the Media library.

(You can do this process in Settings -> Media Library-> Music, Video, Picture Library -> Scan Folder -> Add Scan Folder)



If you find the folder you want to add into library, select /Add to Scan Folder/ and . If the folder has sub folders and you want to add sub folders to Media library, select Add folder with sub-folders.



When you find the folder you want to add into library, just press . has the same function as selecting "/>

2.2.2 Library View

iMEDIAN HD offers three display mode options for the Media Library.



2.2.1.1. Folder (Single Depth)

This option displays all media folders (including sub-folders) as one list.

2.2.1.2. Folder (Multiple Depths)

This option displays media folders at their own depth. If you have classified many Media Files into genre, years, artists, etc. this option may be very useful.

2.2.1.3. Media Explorer

This option displays your files in Windows Explorer layout.

2.2.1.4. Tag (only for Music Library view)

This option displays information sorted by Tag. This option has many sub-options:

Albums, Artists, Composers > Albums, Years > Albums, Genres > Artists > Albums, Artists > Albums.

2.2.1.5. Play List (Only for Music Library View)

This option displays each Play list.

2.2.1.6. Date Taken (Only for Picture Library)

This option displays pictures grouped in order by when the picture was taken.

2.3. Display

Display width :

Wide monitor : Widescreen option is fixed.

4:3, 5:4 monitor : Standard is default.

Screen Scale Calibration : You can resize and move iMEDIAN HD Screen.



2.4. Audio

Speaker : Select your speaker type.

Volume Control : Choose between iMEDIAN HD Volume and System Volume.



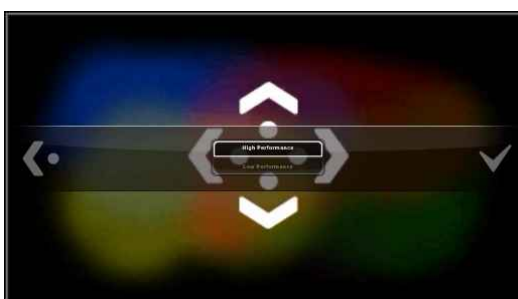
2.5. TV

Select and configure external TV Viewer program.



2.6. Video Performance

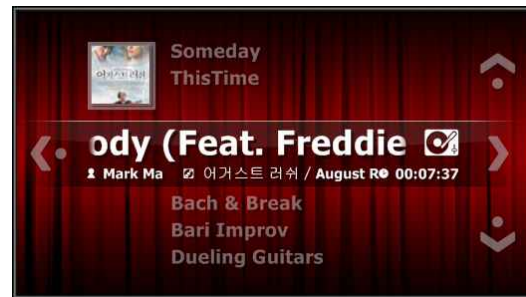
Select Video Card performance. If video card performance is set to high, you can navigate menus while a video is playing in the background.




3. Listening To Music

3.1. Searching Music

Depending on which view mode you have selected, the library will be displayed differently. However, you can navigate all modes with the four directional buttons on your remote.



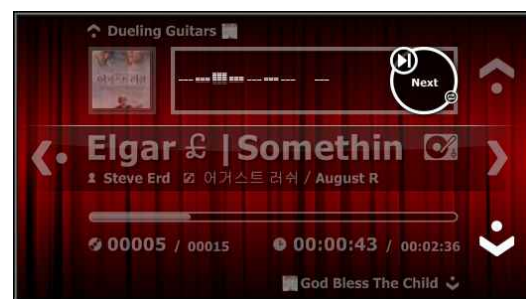
3.2. Play / Pause

Press  to play and pause music.





3.3. Next / Previous


Press ,  to play the next song or the previous song.



3.4. FF / RW


Press ,  to fast forward or rewind while music is being played.

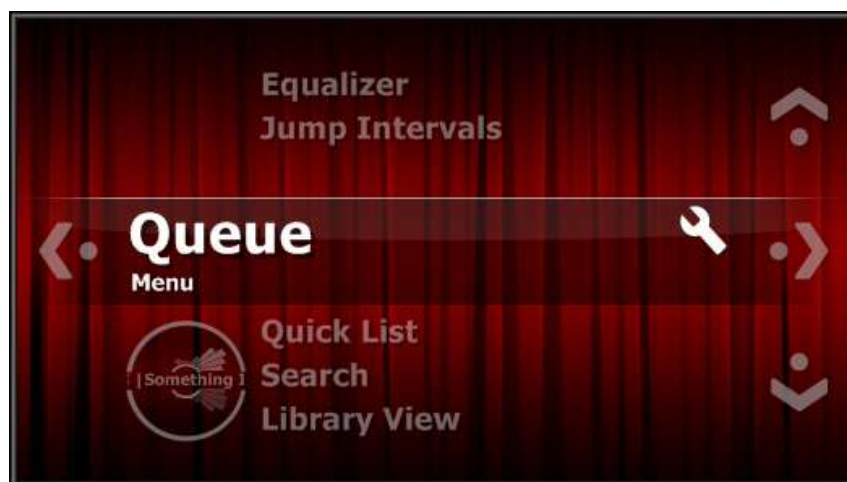
3.5. Entering menu while listening to music.

Press  to enter a menu page or a previous page. When you enter a menu page or a previous page, the EQ and information will be minimized and moved to the bottom left of the screen. After you have finished navigating the menu, select "Now Playing" menu to return to the screen which the music is being played on.



3.6. Entering Music sub menu.


Press  to enter the music sub menu.




Music sub menu

3.6.1. Queue

Add music to Queue and edit Queue.

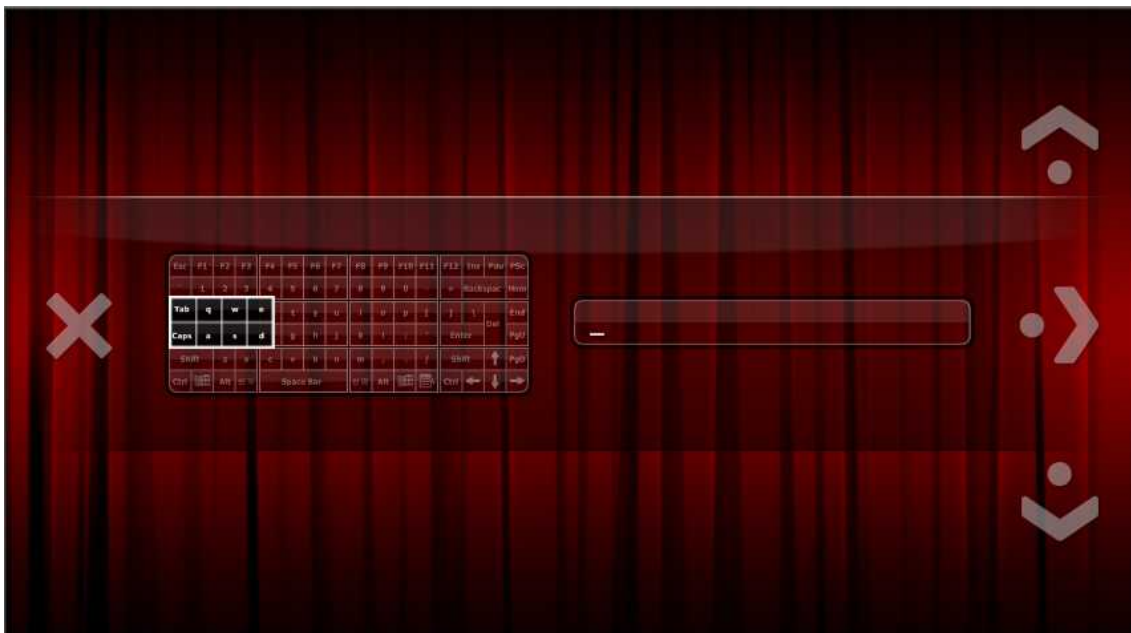
Press  in Queue menu to enter edit menu which has Delete All, Remove, Move up and Move options.

3.6.2. Quick List

Through this menu, you can save a Quick list as a .m3u file. To save a quick list as a file, enter Quick List and Press .

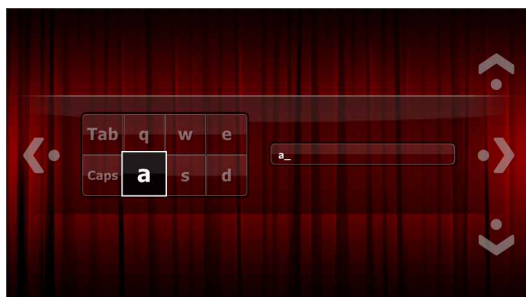


If you select Save, you will be prompted to name the file. The corresponding .m3u file will be created in My Documents -> My Music -> Play List.



3.6.3. Search

Search Music by letter.



3.6.4. Library View

Change Library View option.

3.6.5. **Repeat**

Change repeat mode (Normal , Repeat , Repeat one)

3.6.6. **Shuffle**

Toggle whether shuffle is on or off.

3.6.7. **Equalizer**

Select EQ among 19 Preset EQ options.

3.6.8. **Jump interval**

Set jump interval of FF, RW. (min 3 sec ~ 60 sec)

4. **Watching Videos**


4.1. **Searching Video files.**

Depending on which view mode you have selected, the library will be displayed differently. However, you can navigate all modes with the four directional buttons on your remote.



(Library View option is set to Media explorer)



4.2. **Play / Pause**

Press  to play and pause.


4.3. **Next / Previous**

Press ,  to play next or previous video file.

4.4. **FF / RW**

Press ,  to fast forward or rewind.

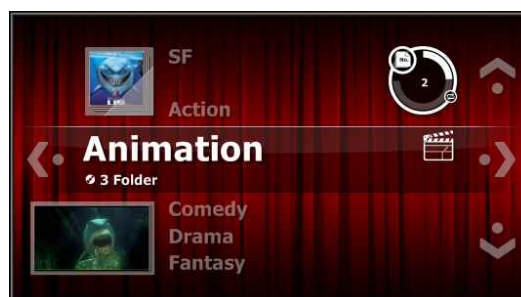
4.5. **Entering a menu during a video.**

Press  to enter the menu page or go to the previous page while a video is being played.

If card performance is set to low performance, then the video which is being played will be minimized and moved to the bottom left of the screen. If card performance setting is set to high performance, a transparent Menu will appear on the screen while the video is playing.



High Performance



Low Performance

4.6. Entering Video sub menu

Press   to enter Video sub menu.



4.6.1. Queue

Add a video file into the Queue.

4.6.2. Search

Search video files by name or character. (refer to 3.6.3)

4.6.3. Library View

Change Library View option. (refer to 2.2.2)

4.6.4. Repeat

Change repeat mode for video.

4.6.5. Shuffle

Toggle shuffle on or off.

4.6.6. Zoom

Choose from 6 aspect ratios:

Source , 4:3, 16:9, 1.85:1, 2.35:1, Fit to screen.

4.6.7. **Color Control**

Adjust color (Brightness, Saturation, Contrast, Hue, Gamma, Red, Green, Blue.)

4.6.8. **Subtitle Processing**

Change and set subtitle options.

(Show/ Hide, preferred language, Font style, Font Rendering method, Output method, subtitle sync interval, subtitle sync, External Subtitle filter control)

4.6.9. **Audio**

Select preferred language if video supports 2-Audio.

4.6.10. **Jump Interval**

Change jump interval of FF, RW

5. **Viewing Pictures**

5.1. **Searching Pictures**

Depending on which view mode you have selected, the library will be displayed differently. However, you can navigate all modes with the four directional buttons on your remote.



Library View option is set to Multiple Depth

5.2. **Play slideshow / Pause slideshow**

Press to play and pause slideshow.

5.3. **Next / Previous**

Press , to select next or previous picture.



5.4. **FF / RW**

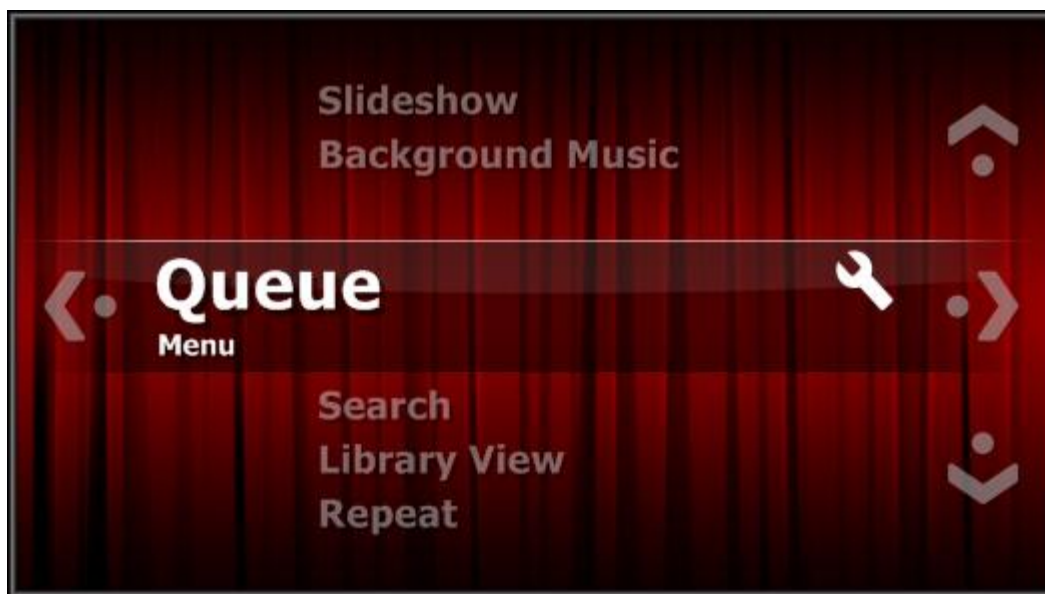
Press , to move next or previous picture quickly.

5.5. **Entering a menu while slide show is playing**

Press to enter a menu page or a previous page. When you enter a menu page or a previous page, the slideshow will be minimized and moved to the bottom left of the screen.

5.6. Entering Pictures sub menu

To enter the picture sub menu, press  .



5.6.1. Queue

Add pictures to slideshow Queue

5.6.2. Search

Search pictures by name or character. (see 3.6.3)

5.6.3. Slide Show

Change transition time and set fade option.

5.6.4. Background Music

Select background music and configure background music options.

6. iMEDIAN HD Settings



6.1. General

6.1.1.1. User Interface

Adjust general user interface.



6.1.1.1.1. Basic

Use Sound

Toggle sound effects on/off in the intro/ending flash.

Sound Level

Adjust the volume of iMEDIAN HD audio.

Volume Control Step

Select volume control step.

Always On Top

Select on top option.

Start up iMEDIAN HD when boot

Select whether or not iMEDIAN HD launches upon startup.

Message Display Time

Adjust the display time of iMEDIAN HD message.

6.1.1.1.2. Background

Color

Select the color of the iMEDIAN HD background.

Use Wall Paper.

If this option is selected, your windows wallpaper will be used as the iMEDIAN HD background.

Image

Choose an image to be used as the iMEDIAN HD background.

6.1.1.1.3. Custom Menu

Select which menus you would like to be displayed in the main menu page.

6.1.1.1.4. Font

Change font.

6.1.1.1.5. Graphic Equalizer

Adjust EQ Direction, EQ Quality, EQ Peak Level.

6.1.1.6. **Video Card Performance Test**

Select Video Card performance. If your videos are not playing smoothly, please set this to low performance.

6.1.1.7. **Intro/ Ending**

Toggle on/off the intro/ending flash animation.

6.1.1.8. **Language**

Select language.

6.1.1.9. **Screen Scale calibration**

Adjust scale of screen and move vertically and horizontally.

6.1.1.10. **Display Width**

Set Display Width to Widescreen or Standard.

6.1.2. **Media Play**

Adjust various setting for Media Play.



6.1.2.1. **Zoom**

Change Zoom option among 6 types.

6.1.2.2. **Play Back**

Set jump interval and work priority.

6.1.2.3. **Filter Control**

Adjust and change options such as Source filter, splitter, Video decoder, Audio decoder and Speaker.

6.1.2.4. **Video Processing**

Select Video renderer.

6.1.2.5. **Audio Processing**

Select individual channel Volume control, Normalizer and select EQ setting.

6.1.2.6. **Subtitle Processing**

Adjust sync, font, output method etc. for subtitles.

6.1.2.7. **Color Controls**

Adjust brightness, saturation, contrast, gamma, hue.

6.2. Media Library

Create Media Library. (see 2.2)

6.3. Media

Select Playback options for Music, Video and slide show.



6.4. DVD

Change general DVD options.



6.5. TV

Select external TV Viewer program if TV card is installed.

iMON

1. iMON is

iMON is the application which transfer the IR data to the keyboard shortcut command and send to Windows System and Applications. iMON is designed to running on the system tray and has many utilities to control the PC. You also can see the iMON Indicator as an 'Always On Top Application' on desktop. Using the right button of mouse on the system tray iMON icon or iMON Indicator, you may see the following popup menu.

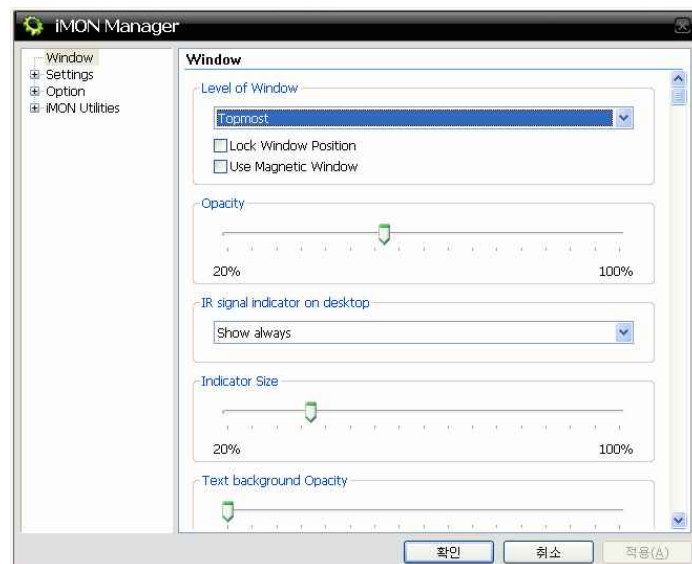


you can control the volume by mouse wheel. Position the mouse pointer on the iMON Indicator first and you can control the volume easily as like follows.

- Volume Up : Rotate the mouse wheel upside, then volume will be increased..
- Volume Down : Rotate the mouse wheel downside, then volume will be decreased.
- Volume Mute : Click the mouse wheel, then volume will be muted.

2. iMON Manager

All setting of remote controller and Front view is configured on iMON Manager. So please read this section carefully before using iMON products.

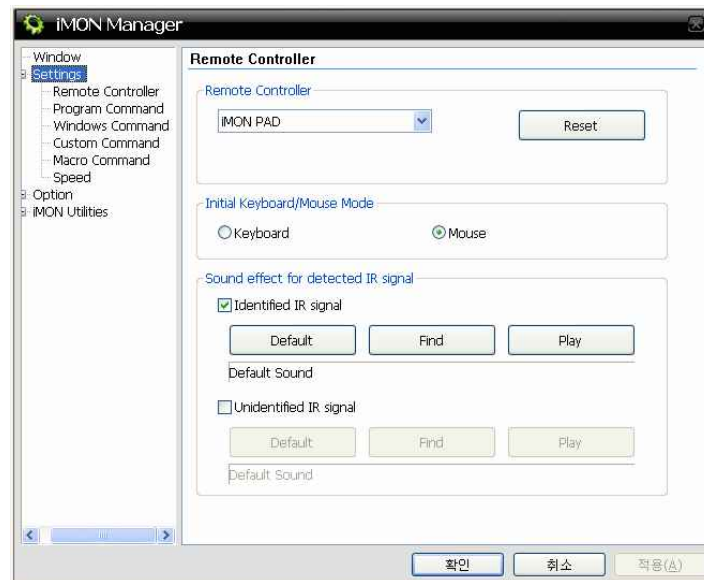


2.1. Window

Change options of indicator (level of window, opacity of indicator, indicator activity when receive IR signal, indicator size and Text Background opacity.)

2.2. Settings

2.2.1. Remote controller



please select correct remote controller you want to use. If wrong remote controller is selected, you can't control iMEDIAN HD or other application through remote controller.

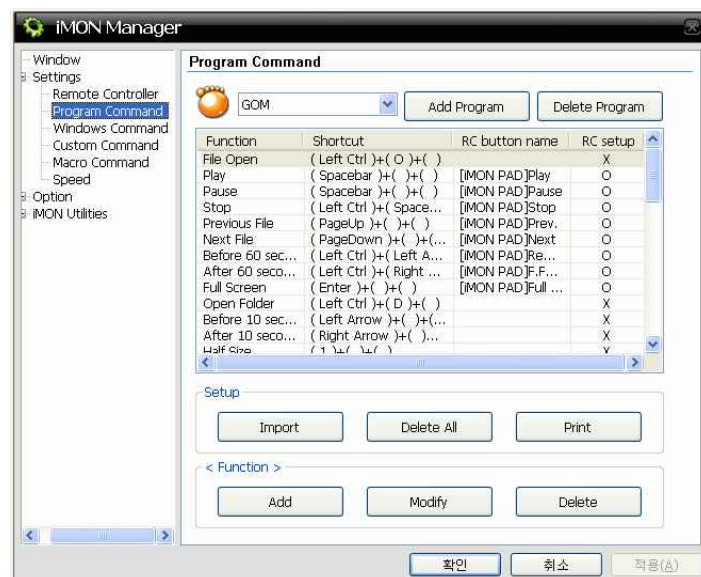
Initial Keyboard/mouse mode :

Set initial mode when iMON starts. Mouse and Keyboard (only iMON PAD)

Sound effect for detected IR signal

Select sound effect which iMON indicator makes when IR receiver receives IR signal from remote controller.

2.2.2. Program command



iMON helps to generate a different keyboard shortcut commands to the different applications which is activated as a front window using same button on the remote controller. So you can assign your 'PLAY' button on the remote controller can generate keyboard shortcut command, 'X' for Winamp and 'CTRL+P' for Windows Media Player when each application is activated and runs as a front window. In order to assign button of remote controller to the application, please follow the next steps.

- Add program

Click Add program button and select program you want to control through remote controller.

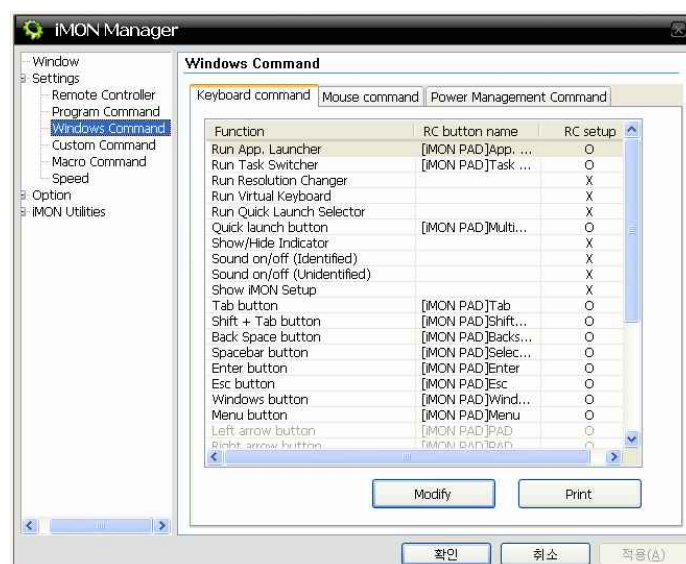
-Add Function

First, Click Add then you can see "register wizard for RC button" dialog box. Next, input function name and click next. Press shortcut of program you added and click next. Finally choose remote controller button which you want to assign to shortcut you pressed.

Same as like this way, you can add other program and other function you want to control

You can import .imo file which is so called a setting file of program command. You can get various .imo files on our website (www.soundgraph.com)

2.2.3. Window command



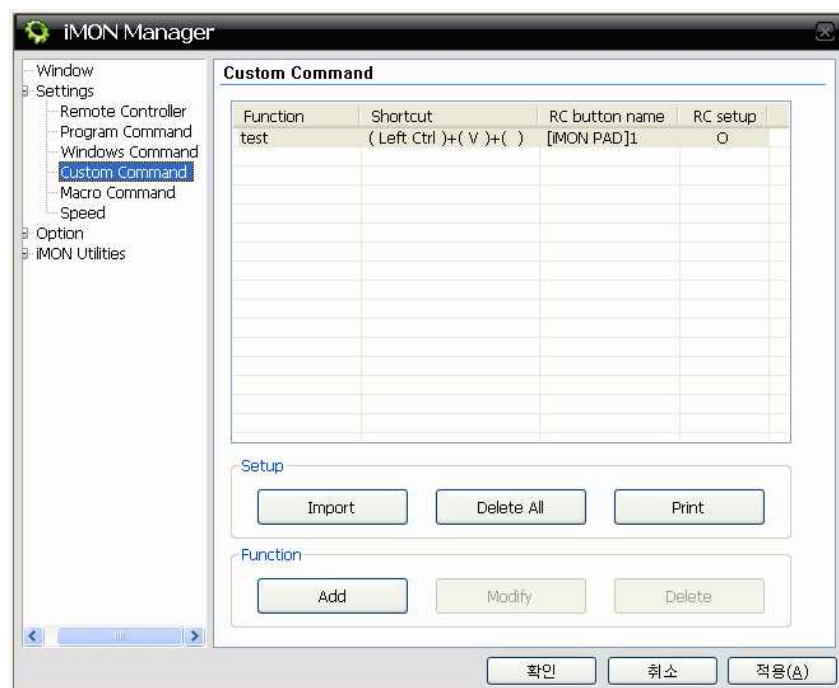
Windows Command has a difference with Program Command that is Windows

Command can be worked at any status. Program Command could be generated when the assigned application is activated and running on the front window but Windows Command could be worked at any application. So this kind of Windows Control is assigned to control the Windows System Command as like volume control and power management command.

Windows Command has three different sections, ① Keyboard Command, ② Mouse Command and ③ Power Management Command. You can customize the remote controller button to different Windows Command but you can't add functions to the Windows Command. The registration process of remote controller for customization is same as like the "Registration wizard for RC buttons" on the Program Command tab. In order to add the function works as Windows Command, you need to use the Customized Windows Command tab on the below.

2.2.4. Custom Command

Add Windows Command in this Custom Command tab. The registration process of remote controller for custom command is same as like the "Registration wizard for RC buttons" on the Program Command and Windows Command tab. Be sure that the Windows Command runs on every application even on the desktop..



2.2.5. Macro command

Macro command is designed to cover some special command which has more than four

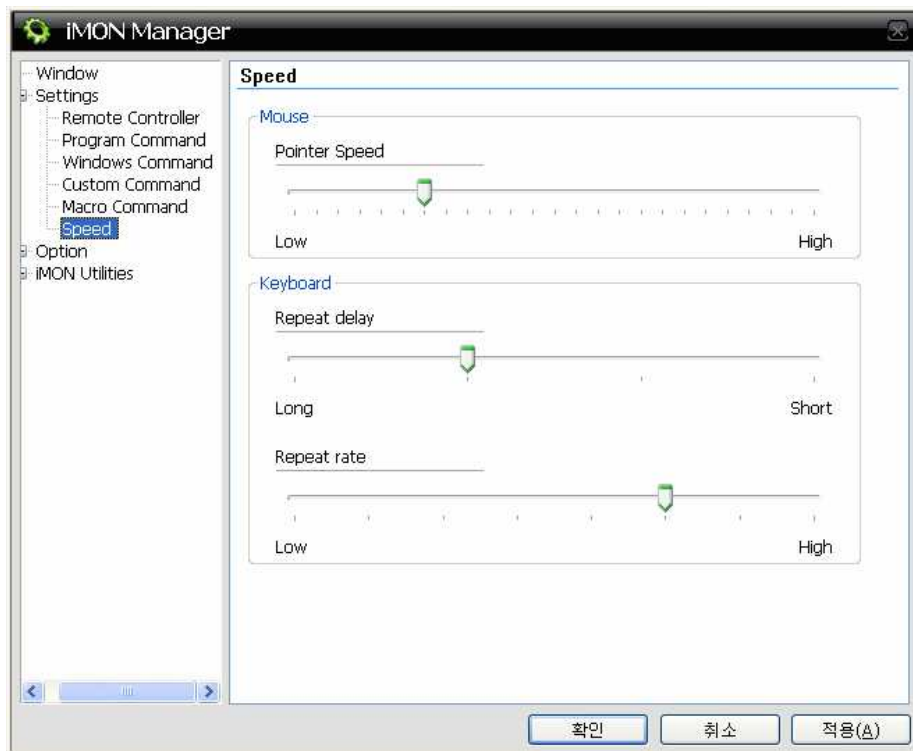
The screenshot shows the iMON Manager application. On the left, a sidebar contains a tree view with the following items: Window, Settings, Remote Controller, Program Command, Windows Command, Custom Command, **Macro Command** (highlighted), Speed, Option, and iMON Utilities. The main area displays the 'Macro Command' dialog box. This dialog features a table with four columns: Function, Shortcut, RC button name, and RC setup. The first row contains the text 'go to soundgraph', the URL 'www.soundgraph.com', the button name '[iMON PAD]9', and the setup code 'O'. Below the table is a horizontal scrollbar. Underneath the table are two groups of buttons. The 'Setup' group includes 'Import', 'Delete All', and 'Print' buttons. The 'Function' group includes 'Add', 'Modify', and 'Delete' buttons. At the very bottom of the window are three large buttons: '확인' (OK), '취소' (Cancel), and '적용(A)' (Apply).

| Function | Shortcut | RC button name | RC setup |
|------------------|--------------------|----------------|----------|
| go to soundgraph | www.soundgraph.com | [iMON PAD]9 | O |
| | | | |
| | | | |
| | | | |
| | | | |
| | | | |
| | | | |
| | | | |
| | | | |
| | | | |

Buttons in the dialog:

- Setup: Import, Delete All, Print
- Function: Add, Modify, Delete
- Bottom: 확인 (OK), 취소 (Cancel), 적용(A) (Apply)

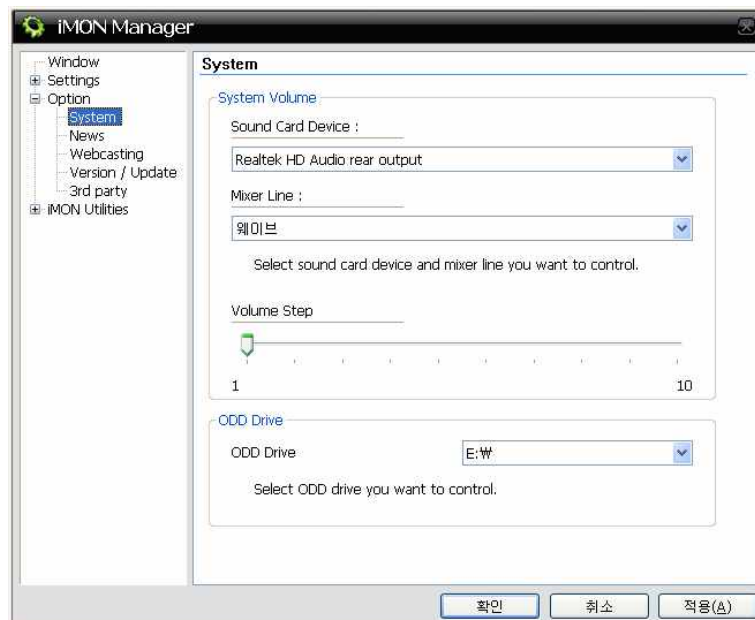
Adjust speed of Mouse pointer (for iMON PAD) , keyboard repeat delay time and repeat rate.



2.3. Option

2.3.1. System

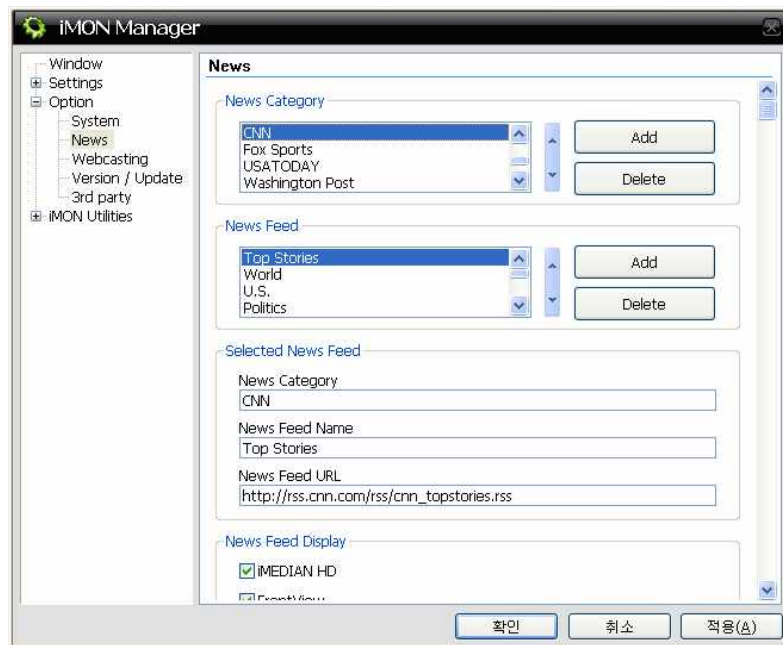
Select Sound card device and Mixer line to control volume and can change volume step.
And select ODD device to control in iMEDIAN HD.



2.3.2. News

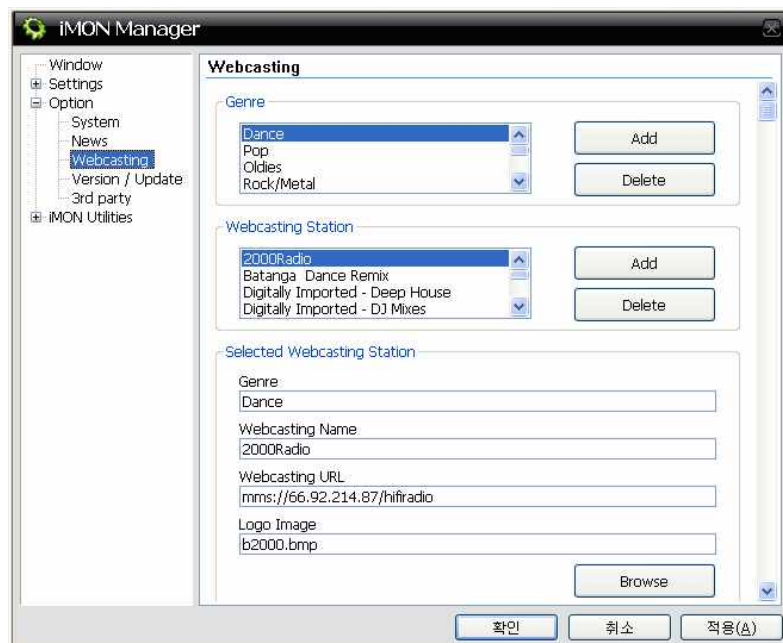
You can add, delete and edit news feeds and select object where news feeds are

displayed.



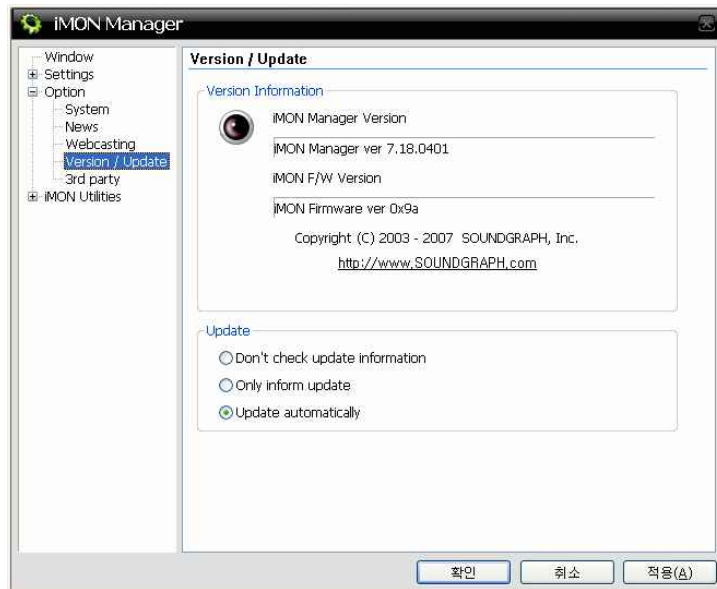
2.3.3. Web casting

You can Add, delete and edit web casting URL.



2.3.4. Version/ update

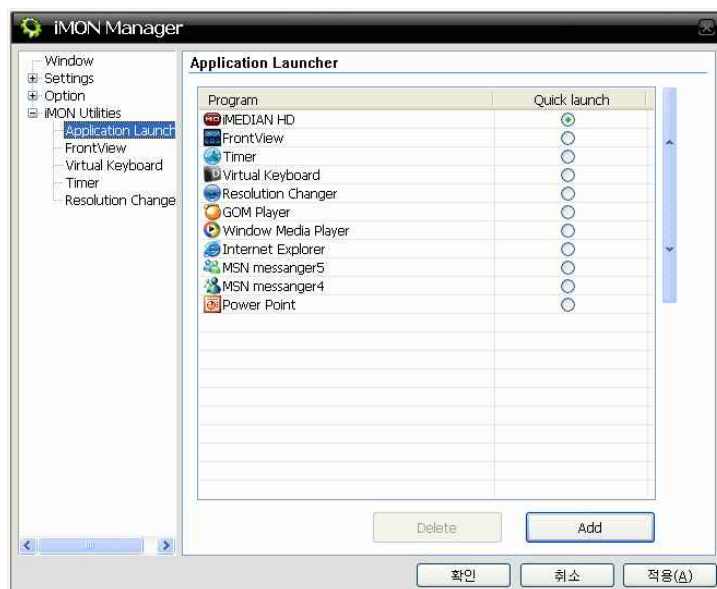
Select update method and check iMEDIAN HD Version and firmware version.



2.4. iMON Utilities

2.4.1. Application Launcher

Select application which runs when Quick Launch button is pressed. Default is iMEDIAN HD.

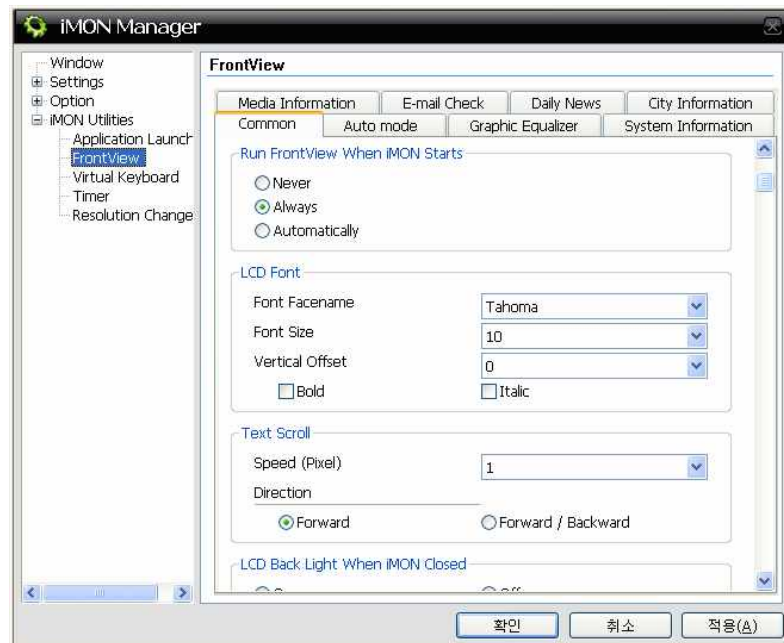


2.4.2. Front View

Change the setting of Front View like VFD or LCD.

2.4.2.1. Common

Select LCD Font, Back light activity and Text Scroll speed.



2.4.2.2. Auto Mode

Select Category

Select information which is displayed on Front View.

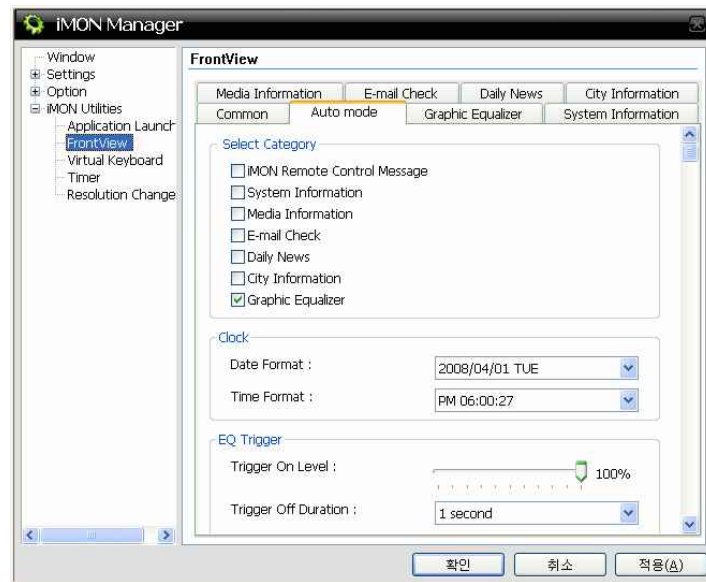
Clock

Select time format. 3 types of time format and 5 types of date format are available.

EQ Trigger

Trigger on level : Adjust a level of volume. When iMEDIAN HD or system makes sound above the level, EQ will be displayed.

Trigger off duration : Adjust a duration time. When iMEDIAN HD or system doesn't make sound for duration time, EQ will be turned off.



2.4.2.3. Graphic Equalizer

EQ display

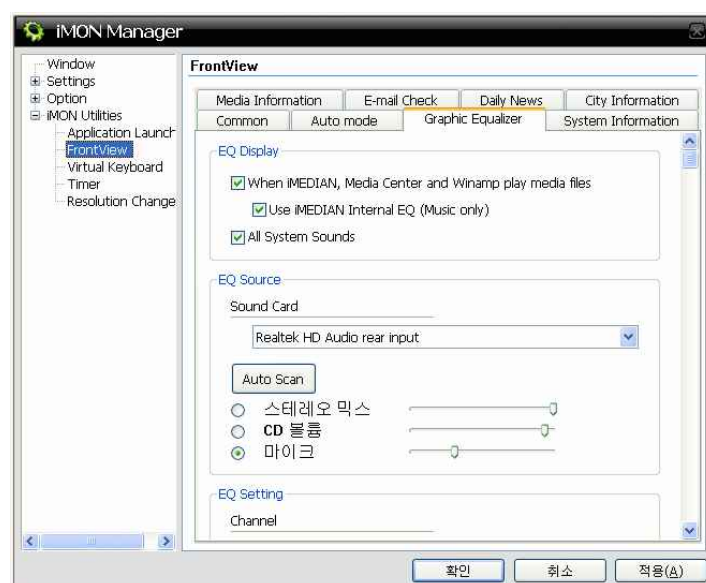
Select sound source which is displayed on Front View as EQ.

EQ source

Select the record mixer channel or using the 'Auto Scan' button. In order to show the graphic EQ display, iMON capture the sound out of the soundcard recording mixer channel.

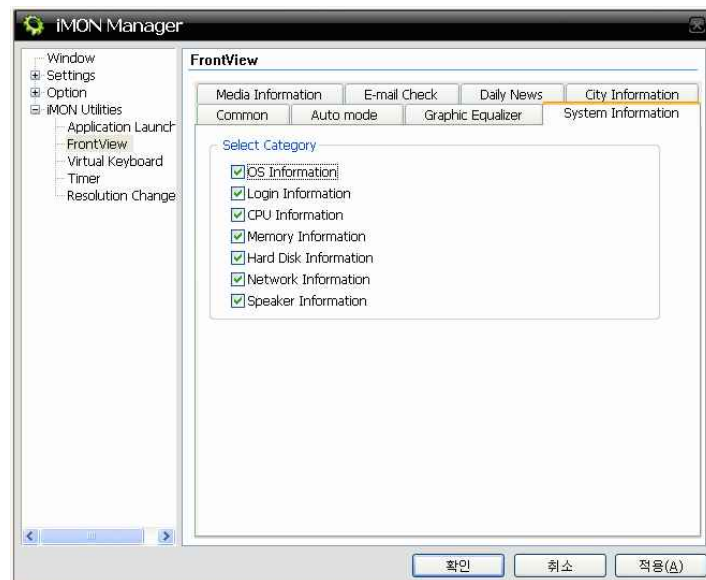
EQ Setting

Select general option for EQ display.



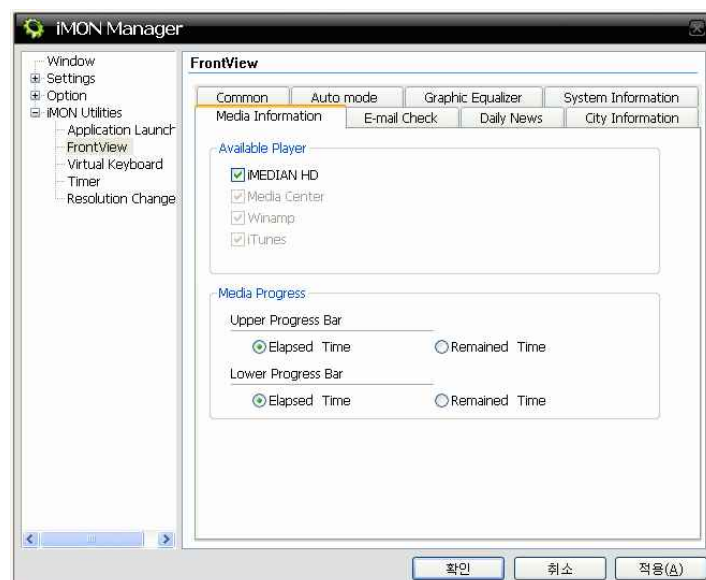
2.4.2.4. System Information

Select system information which is displayed on Front View.



2.4.2.5. Media Information

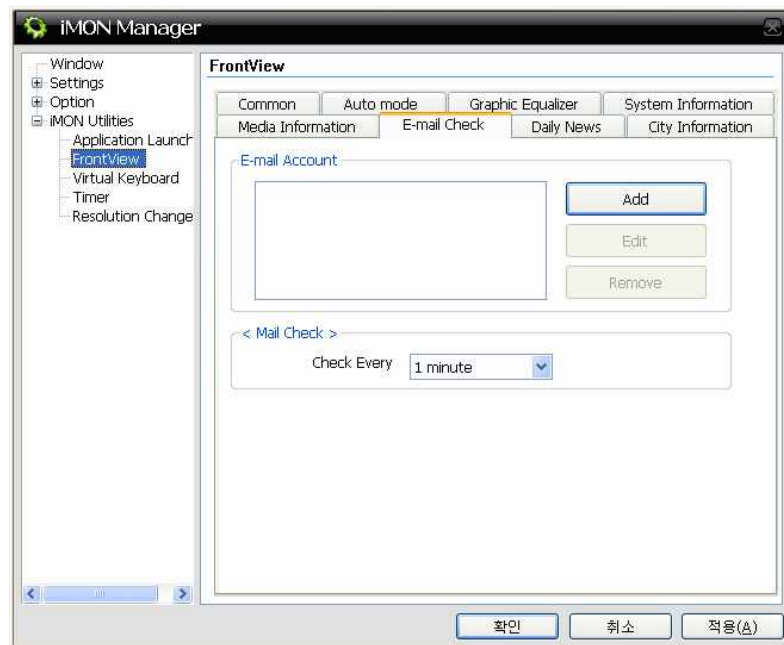
Select Media player which send information to Front View and set Media progress activity.



2.4.2.6. E-mail check

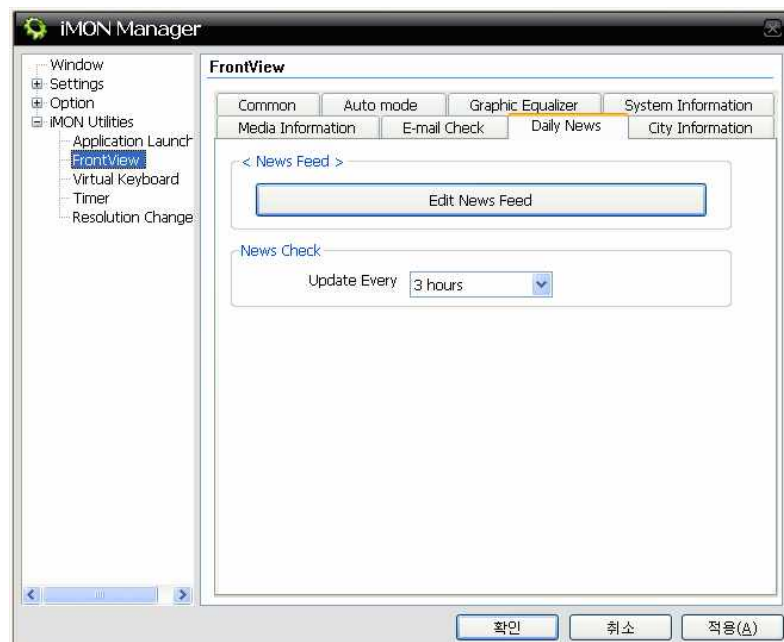
iMON Front View can show the number of unread email messages on your POP3 account. You need to register your POP3 email account information at the 'Email

Check Option' menu.



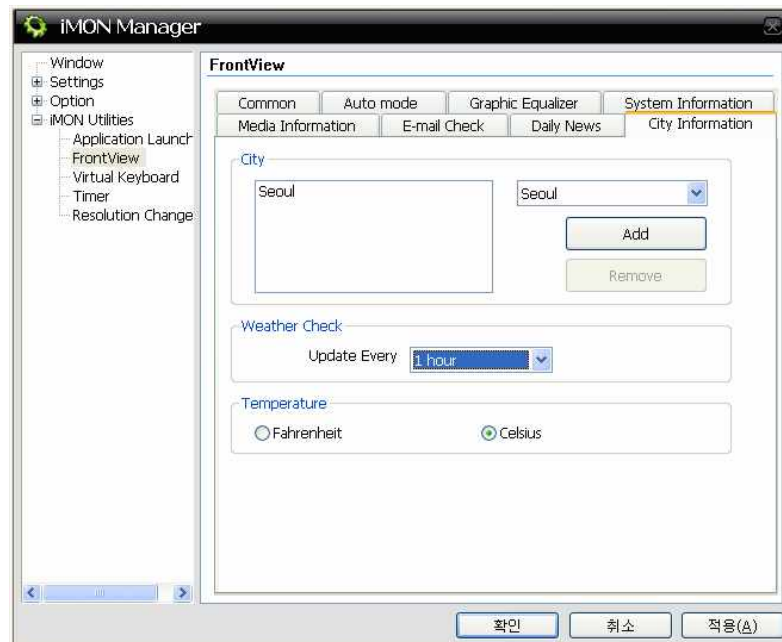
2.4.2.7. Daily News

iMON Front View can show the worldwide headline news. This news could be delivered when system is connected to the internet. You can set the news update interval from the internet.



2.4.2.8. City Information

iMON Front View can show the current local time and weather information. Select the cities that you want to see the time and weather information from the city list. Currently, iMON supports the information of time and weather about 600 cities around the world.



2.4.3. Virtual Keyboard

Adjust the setting for virtual keyboard.

2.4.4. Timer

iMON has the Timer function that shuts down or turns on PC at scheduled time or sounds alarm after a certain time. Be sure that the turn on PC feature is only supported on the iMON VFD model only

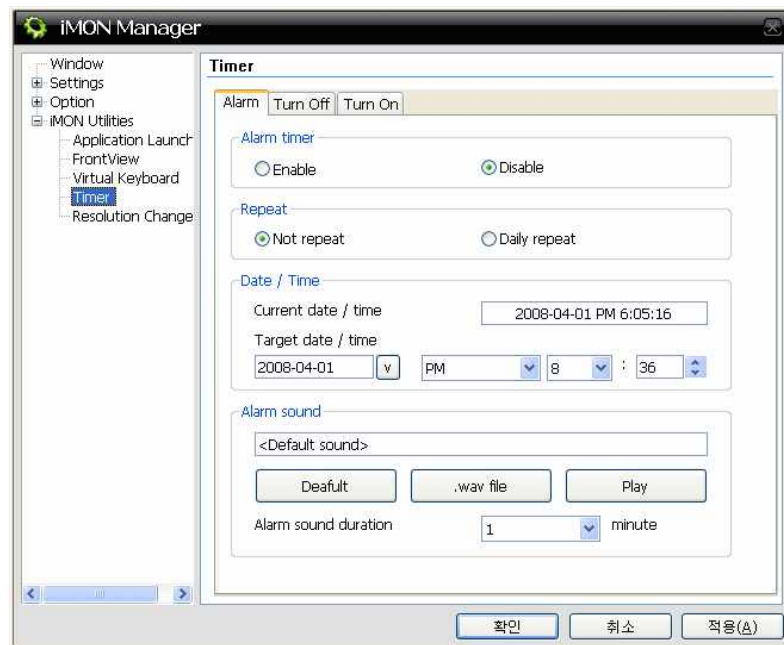
There are three modes: Power Off, Power On, and Alarm in iMON Timer.

Power Off mode shuts down the PC after a certain period of time.

Power On mode turns on the PC at scheduled time.

Alarm mode sounds the alarm after a certain period of time.

You can also use arrow button to set the time. iMEDIAN also prepared the Timer feature, and the Timer feature of iMEDIAN can cover the alarm with assigned song and PVR (Personal Video Recording) feature.

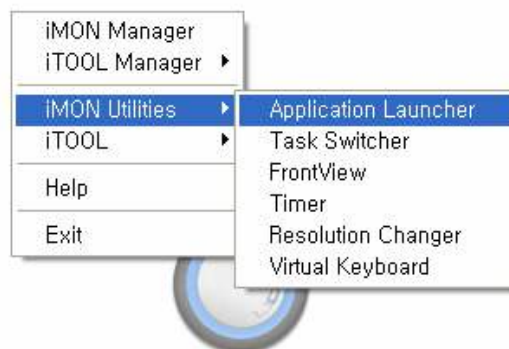


2.4.5. Resolution Changer

Select resolution which is displayed on Resolution changer application.

3. iMON Utilities

You can see iMON utilities when you click right button of mouse on iMON indicator



3.1. Application Launcher

'Application Launcher' is a one of iMON applications. You can run application by app. Launcher button on remote controller (except MINI).



3.2. Task Switcher

Task Switcher is used to switch the application among the running applications as like [ALT]+[TAB] command. 'Task Switcher' window shows the application icons currently running.



3.3. Front View

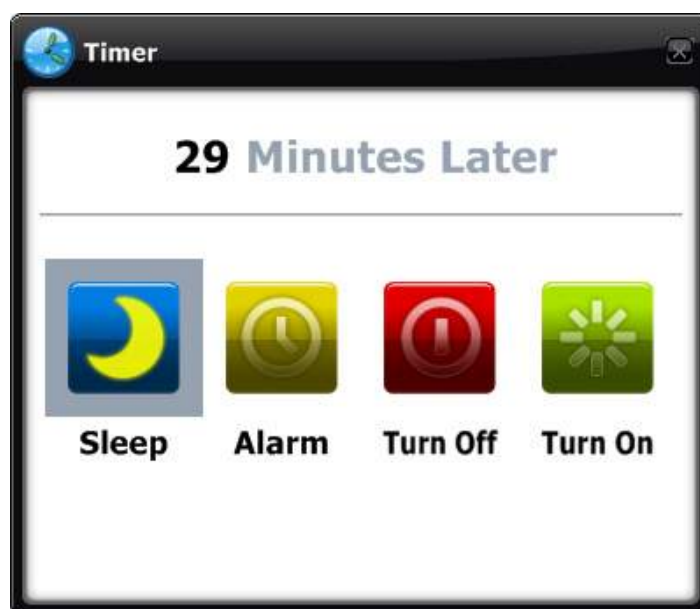
You can select Front view display mode. (refer to 2.4.2) when you press volume knob for

2 sec on imon product having Front View device as like VFD or LCD, Front View application will be running.



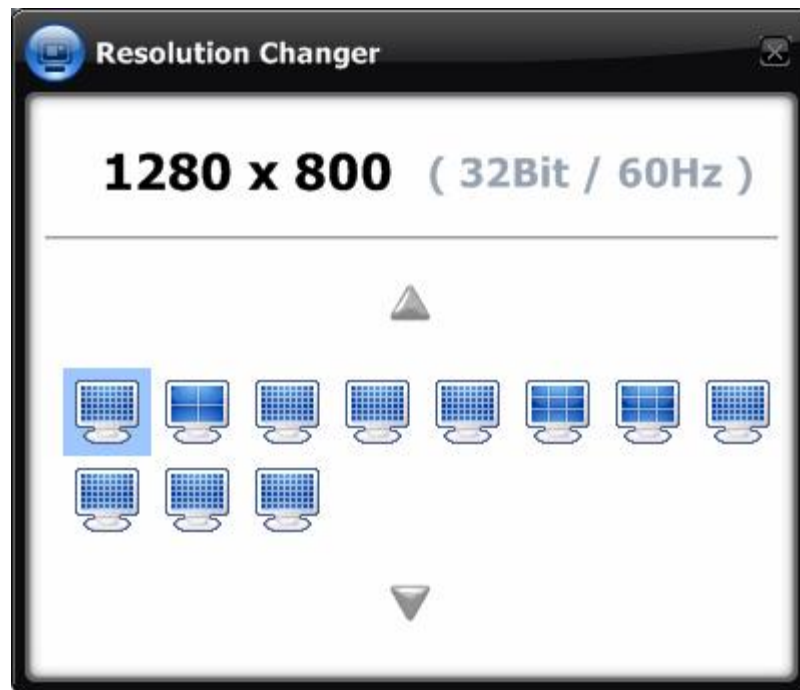
3.4. Timer

You can turn on and off options of Turn on/Turn. And You can adjust time of alarm and sleep option.



3.5. Resolution Changer

You can change your resolution. (refer to 2.4.5)



3.6. Virtual Keyboard

virtual keyboard is for writing text on application. Virtual keyboard is same as PC keyboard. In order to input text on application, first, locate cursor on text input field of application you want to write on and run virtual keyboard by remote controller(except MINI).



4. iTOOL

4.1. News iTOOL

News iTOOL is an application for displaying news feed on PC Screen. Please refer to 2.4.2.7 for setting.

4.2. Word City iTOOL

World City iTOOL is an application for displaying time and weather information of world city.

- You can change options of iTOOL News and World city Information in iTOOL Manager.

Dear Customers.

We all sound graph staffs appreciate you for using our iMON Products.

If you find bugs on iMON products, please send e-mail to iMON@soundgraph.com.

If you have any question on iMON products, please find your answer on iMON user forum of our website(www.soundgraph.com)

Best Regards.

Sound Graph., Inc.

Sound Graph., Inc.

Address

#709 Woolim Lions Valley II, 680 GaSan-Dong, GeumCheon-Gu, Seoul, Korea. 153-787

Telephone

82-70-7018-5372

Fax

82-2-2027-2210

E-mail

imon@soundgraph.com

Website

www.soundgraph.com